

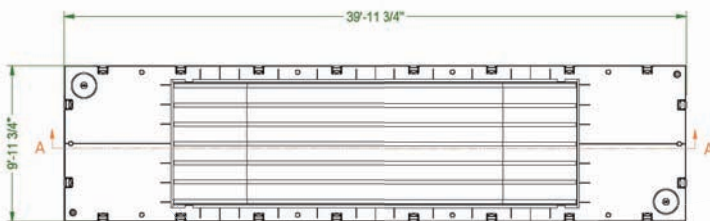
POSEIDON® BARGE P2-7' SECTIONAL HOPPER



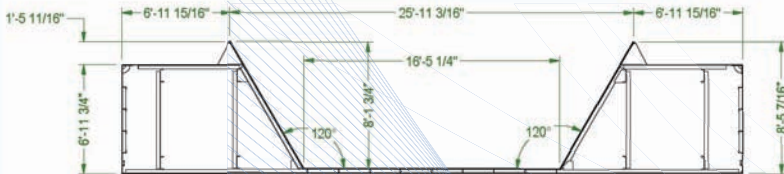
The Poseidon Hopper Barge is made to the same dimensions as the Poseidon P2-40' x 10' x 7' barge section. The P2-7' Hopper has male and female connections to allow for the sections to attach to one another or to another Poseidon P2-40' x 10' x 7' Standard Barge.

HEAVY DUTY CONSTRUCTION INCLUDES:

- 40' Long x 10' Wide x 8' 5-3/4" Tall Hopper Barge
- 3/8" Wall and Floor Thickness
- Physical Shipping Weight 40,900 lbs
- 50 Yard Hopper Box
- Four Point lifting points
- 1.6' Draft Empty Fresh Water
- Two (2) —18" Deck Hatches Each
- 4" Diameter drain plug



PLAN VIEW
SCALE 1:75



SECTION A-A
SCALE 1:75

Draft Levels Material Capacity:

- 2' draft: 4.5 tons of material
- 4' draft: 29.5 tons of material
- 5'10" max allowable draft holds 52. tons of material

Material weight varies depending on the make up of the dredge material.



POSEIDON® BARGE, LTD

725 East Parr Road, Berne, IN 46711

PH: 866-99-BARGE; FAX: 260-589-2088

WEBSITE: www.poseidonbarge.com

STOCK LOCATIONS: Berne, IN • Plain, WI • Leland, NC
Cocoa, FL • Coeymans, NY • St. Louis, MO • New Orleans, LA